



**SharkBite<sup>®</sup>**  
CASH ACME

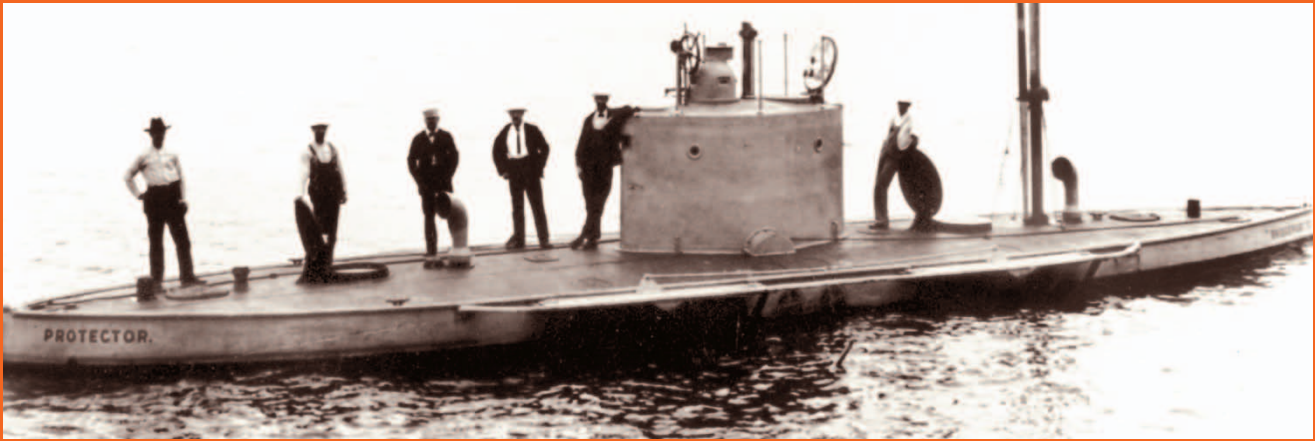
**CONNECTION SYSTEM**



**OVERBUILT IS AN UNDERSTATEMENT.<sup>®</sup>**

JULY 2009

CA  1" class="text" style="font-size: 2em; font-weight: bold; vertical-align: middle;"/> 1" class="text" style="font-size: 2em; font-weight: bold; vertical-align: middle;"/>



# IT ALL STARTED WITH A DEEP NEED FOR THE MOST RELIABLE VALVES EVER BUILT.

The year was 1893 when the young engineer A.W. Cash was given the toughest challenge of his career: designing valves for U.S. Navy submarines. With the unforgiving ocean as his ultimate testing “ground”, his new valves would require unprecedented levels of performance, reliability and dependability. When he later founded the Cash Valve Manufacturing Company, those same standards became its foundation.



*Patent Pending  
Multi-Cartridge PRV*

And they remain at the heart of today’s Cash Acme. We put more into every product we make – more design, more experience, more innovation and cutting-edge manufacturing technologies. Combined with a relentless quality control program that’s every bit as unforgiving as A.W.’s ocean.

In short, we don’t just build it, we overbuild it. The result is industry-leading products like Heatguard®, our thermostatic mixing valve that allows water to be stored at germ-killing temperatures, while delivering it at a safe 120°F or less. SoloSet® Multi-Cartridge PRV, a cost saving solution for applications that are subject to wide variations in water demand. Cash-Flo®, the industry’s most



*Heatguard 115-D  
With Double Union  
SharkBite Connectors*

maintenance-free backflow preventers. And the SharkBite® Connection System with push-fit and barb fittings, valves and PEX tubing – the fastest, easiest way from meter to fixtures and the industry’s only Total Rough-In Solution.™ Just a few examples of how we apply deeper thinking to water control technology.



*Cash-Flo® RPZ  
Backflow Preventer*

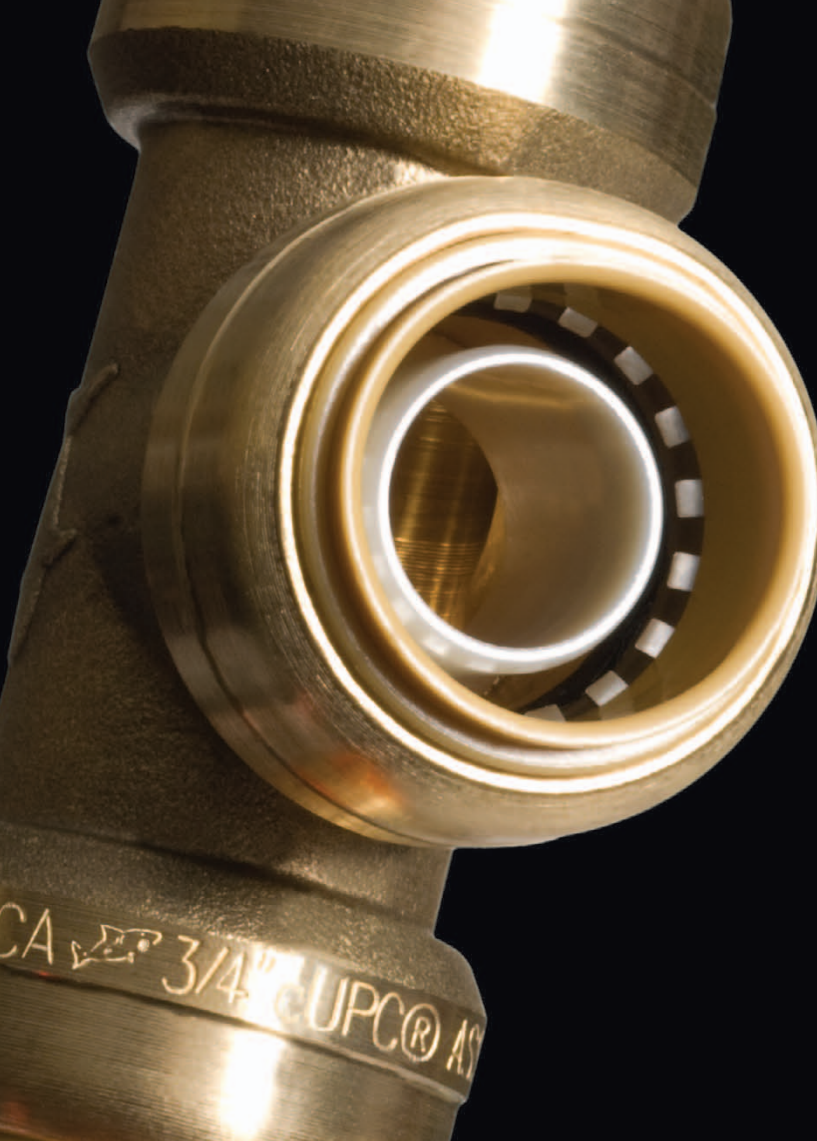
## CONTENTS

Introduction .....	2
Applications .....	3
SharkBite Push-Fit Fittings .....	4-5
Stops and Fixture Supply fittings .....	6
Push-fitting Tools .....	6
Valves with Push-fit Connectors .....	6-7
Temperature and Pressure Gauges .....	7
PEX Tubing .....	8
SharkBite PEX/Barb Products .....	9-11
Clamp and Crimp Tools .....	11
Valves with Barb Connectors .....	11
Certifications .....	12



**OVERBUILT IS AN UNDERSTATEMENT.®**





## THE SHARKBITE® CONNECTION SYSTEM

### LIGHTNING FAST. WON'T LET GO.

- Connects copper, CPVC and PEX pipe in any combination.
- No soldering, clamps, unions or glue.
- Certified to 200 psi and 200°F.
- Approved for use underground and behind walls without access panels.
- Certified for potable water and hydronics.
- Integral tube liner for PEX installations.
- Fittings can even be rotated after assembly for easier installation in tight spaces.
- Easy to disconnect if needed.

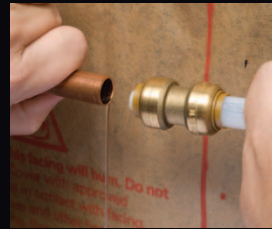


## TYPICAL SHARKBITE® APPLICATIONS



### NEW CONSTRUCTION

Cut. Push. Done. The SharkBite® Connection System is the fastest, easiest way to plumb any residential or commercial job.



### WET OR DRY REPAIRS

There's no faster way to make a repair - wet or dry. You can connect copper, CPVC or PEX pipe in any combination.



### WATER HEATERS, VALVES AND MORE

Connect a water heater or shower valve. Install a mixing valve or pressure regulator - it's all a breeze with SharkBite® push-fit connections.



### HYDRONIC HEATING SYSTEMS

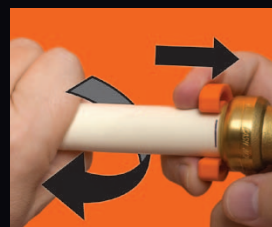
Under the floor or behind a wall, a broad range of SharkBite® push-fit fittings and PEX products gives you confident connections.

## INSTALLATION AND DISCONNECTION



### EASY INSTALLATION

Ensure the pipe is cut square and rough edges and debris are removed. Mark pipe for 1" depth. Push pipe and fitting together.



### FAST DISASSEMBLY

Using the simple disconnect tool, fittings can be easily changed and reused.

# THE SHARKBITE® CONNECTION SYSTEM

## SharkBite® Push-Fit Products

SharkBite continues to lead the industry with an expansive line of fittings, valves and other innovative, labor saving products for plumbing projects. SharkBite push-fit fittings are the fastest, easiest way to join copper, CTS CPVC and PEX in any combination. With no soldering or glue. Certified: 200 psi & 200° F (93° C). Use for new installation and repair of potable water distribution systems. See certifications & approvals on page 12.

### Couplings

#### Straight Couplings



SIZE	P/N	P/N (Lead Free)
1/4" X 1/4"	U004	U004LF
3/8" X 3/8"	U006	-
1/2" X 1/2"	U008	U008LF
5/8" X 5/8"	U012	-
3/4" X 3/4"	U016	U016LF
1" X 1"	U020	U020LF

#### Reducing Couplings



3/8" X 1/2"	U009	U009LF
3/4" X 5/8"	U057	-
3/4" X 1/2"	U058	U058LF
1" X 3/4"	U060	U060LF

### Connectors

#### Straight Connectors



1/2" X 1/2" FNPT	U072	U072LF
3/4" X 3/4" FNPT	U088	U088LF
1" X 1" FNPT	U094	U094LF
1/2" X 1/2" MNPT	U120	U120LF
3/4" X 3/4" MNPT	U134	U134LF
1" X 1" MNPT	U140	U140LF

#### Bullnose Connectors

3/4" X 1/2" FNPT	U092	-
3/4" X 1/2" MNPT	U138	U138LF

#### Reducing Connectors



1/4" X 1/2" FNPT	U066	U066LF
1/2" X 3/4" FNPT	U068	U068LF
3/8" X 1/2" FNPT	U070	-
1/4" X 1/2" MNPT	U110	U110LF
1/2" X 3/4" MNPT	U116	U116LF
3/8" X 1/2" MNPT	U118	-
5/8" X 3/4" MNPT	U126	-
3/4" X 1" MNPT	U139	-
1" X 3/4" MNPT	U142	U142LF

### Elbows



SIZE	P/N	P/N (Lead Free)
1/4" X 1/4"	U244	U244LF
3/8" X 3/8"	U246	-
1/2" X 1/2"	U248	U248LF
5/8" X 5/8"	U252	-
3/4" X 3/4"	U256	U256LF
1" X 1"	U260	U260LF
1/2" X 1/2" MNPT	U280	U280LF
1/2" X 1/2" FNPT	U308	U308LF

#### Reducing Elbow



1/2" X 3/8"	U272	-
3/4" X 5/8"	U273	-
3/4" X 1/2"	U274	U274LF
1" X 3/4"	U278	-

#### Dishwasher Elbow

1/4" X 3/8" MIP	U276	U276LF
1/2" X 3/8" MNPT	U281	-

#### Drop Ear Elbows



1/2" X 1/2"	U249	U249LF
3/8" X 1/2" FNPT	U332	-
1/2" X 1/2" FNPT	U334	U334LF
3/4" X 3/4" FNPT	U340	-

#### Hy-Ear Elbow



1/2" X 1/2" FNPT	U335	U335LF
------------------	------	--------

### Tees



1/4" X 1/4" X 1/4"	U358	U358LF
3/8" X 3/8" X 3/8"	U360	-
1/2" X 1/2" X 1/2"	U362	U362LF
5/8" X 5/8" X 5/8"	U366	-
3/4" X 3/4" X 3/4"	U370	U370LF
3/4" X 3/4" X 3/4" FNPT	U462	-
1" X 1" X 1"	U374	U374LF
1" X 1" X 1" FNPT	U464	-

#### Bullnose Tee



3/8" X 3/8" X 1/2"	U364	-
--------------------	------	---

#### Reducing Tee



1/2" X 1/2" X 1/4"	U359	-
1/2" X 1/2" X 3/8"	U363	-
3/4" X 3/4" X 1/2"	U412	U412LF
3/4" X 1/2" X 3/4"	U444	U444LF
3/4" X 1/2" X 1/2"	U454	U454LF
1" X 1" X 3/4"	U416	U416LF

**End Stops**



SIZE	P/N	P/N (Lead Free)
3/8"	U512	-
1/2"	U514	U514LF
5/8"	U516	-
3/4"	U518	U518LF
1"	U520	U520LF

**Fitting Reducers** (Use to connect to smaller pipe sizes)



3/8" X 1/2" CTS	U719	-
3/8" X 3/4" CTS	U721	-
1/2" X 1" CTS	U722	-
3/4" X 1" CTS	U724	-

**Threaded Adapters**



3/4" CTS X 3/4" FNPT	U766	-
1" CTS X 1" FNPT	U772	-

**Slip Fittings** - For use with copper only.

Slip fittings simplify repair by doing the job that two couplings and extra pipe used to do. Only one end of the coupling has a stop, allowing the other end to slide freely over the end of a pipe. The fitting can be released with a disconnect tool and slid back onto the other end of the pipe for successful leak repair.

**Slip Couplings**



1/2"	U3008	U3008LF
3/4"	U3016	U3016LF
1"	U3020	U3020LF

**Slip Tees**



1/2"	U3362	U3362LF
3/4"	U3370	U3370LF
1/2" X 1/2" X 1/2" FNPT	U3482	U3482LF
3/4" X 3/4" X 3/4" FNPT	U3486	U3486LF

**Water Hammer Arrestor**



Provides maintenance-free, continuous protection against water hammer. Can be positioned vertically or horizontally and the SharkBite® connectors allow the arrestor to be installed in seconds, even on wet pipe.

1/2" Residential	22630	-
1/2" Commercial	22631	-
3/4" Residential	22632	-
1" Commercial	22633	-

**Manifolds with SharkBite® Push-fit Branches**



Manifolds are traditionally used in PEX systems, but this new SharkBite manifold will allow easy incorporation into copper or CPVC systems. Use SharkBite push fittings to install these manifolds anywhere in a plumbing system. All manifolds have a 1" trunk with 3/4" tube inlets & outlets and 1/2" push-fit ports (2" on center).

3 port open	22995	-
3 port closed	22996	-
4 port open	22997	-
4 port closed	22998	-

**Flexible Water Heater Connectors**

The 3/4" X 3/4" FIP, stainless steel braided flexible hose and the rotatability of the SharkBite fitting allow making connections in tight spaces without additional fitting, soldering or glue.



12" length	U3088FLEX12	U3088FLEX12LF
15" length	U3088FLEX15	U3088FLEX15LF
18" length	U3088FLEX18	U3088FLEX18LF
24" length	U3088FLEX24	U3088FLEX24LF

**Water Heater Installation Kit**

Kits include 2 SharkBite® connector fittings and a disconnect clip.



1/2" X 3/4" FNPT	22604	-
3/4" X 3/4" FNPT	22441	-

**Contractor Kits**

These SharkBite® Kits include a variety of push-fit fittings, disconnect tongs and clips, and a sturdy case for storage and transport. Cash Acme's SharkBite Connection System is a revolutionary solution for connecting or repairing water distribution pipe.

**Contractor Kit**

**Includes 2 each:** U008, U016, U058, U072, U088, U120, U134, U248 and U256. **1 each:** U362, U370, U514, U518, U710, U711, U713 and U702.

22486	22486LF
-------	---------



**Irrigation Kit**

**Includes 2 each:** U016, U020, U134, U140, U256 and U260. **1 each:** U088, U094, U370, U374, U518, U520, U702, U712, U713, U714, U715, U766, U772 and U3016.

22795	-
-------	---





# THE SHARKBITE® CONNECTION SYSTEM

## Stops & Fixture Supply Fittings

### Angle Stop



SIZE	P/N	P/N (Lead Free)
1/2" x 3/8" comp	23036	23036LF

### Straight Stop



1/2" x 3/8" comp	23037	23037LF
------------------	-------	---------

### Stop Valve Tee Adapter



1/4" x 1/4" x 3/8" compression	U3358	U3358LF
--------------------------------	-------	---------

### Stop Valve Connector



1/4" x 9/16" -24 UNEF Thread	U3523	U3523LF
------------------------------	-------	---------

### Faucet Connector



1/4" x 1/2" F 14 NPSM Threads	U3525	U3525LF
-------------------------------	-------	---------

### Toilet Connector



1/4" x 7/8" ballcock threads	U3531	U3531LF
------------------------------	-------	---------

### Toilet Elbow



1/4" x 7/8" ballcock threads	U3537	U3537LF
------------------------------	-------	---------

## Tools

### Safe Seal Tool



Deburring and depth gauge all in one. For 1/2", 3/4" and 1" PEX, copper and CPVC pipe.	U702	-
----------------------------------------------------------------------------------------	------	---

## Disconnect Clips



SIZE	P/N	P/N (Lead Free)
1/4"	U706	-
3/8"	U708	-
1/2"	U710	-
5/8"	U3712	-
3/4"	U712	-
1"	U714	-

## Disconnect Tongs



1/2"	U711	-
3/4"	U713	-
1"	U715	-

## Cash Acme Valves with SharkBite® Connectors

Cash Acme valves with integral or union type SharkBite push-fit connectors offer a tremendous time and labor saving combination for any plumbing application.

## Check Valves

A general purpose, spring loaded check valve that can be installed on copper, CTS CPVC and PEX. The SharkBite® check valve can be installed horizontally or vertically and prevents the reverse flow of water in the supply line.



1/2"	U2008	-
3/4"	U2016	-
1"	U2020	-

## Ball Valves

Full port ball valve now comes with integral SharkBite® connectors for easy installation. The body is composed of highly forged brass and features a single lever control. Use for entire systems, sections or components.




1/2"	22222-0000	22222-0000LF
3/4"	22185-0000	22185-0000LF
1"	22223-0000	22223-0000LF
1/2" X 1/2" FNPT	22182-0000	-
3/4" X 3/4" FNPT	22186-0000	-
1" X 1" FNPT	22187-0000	-
1/2" with drain	22304-0000	-
3/4" with drain	22305-0000	-
1" with drain	22306-0000	-


**Regulators**

The innovative, labor reducing SoloSet® EB-25, the EB-35, and the EB-45 pressure reducing regulators are all available with double union or direct SharkBite® connectors. The EB-25 is set at 45 psi and features a twist cap with a numerical pressure indicator for easy one-man adjustment. The EB-35 is factory set at 45 psi with an adjustment range of 20-90 psi depending on valve size. The EB-45 is factory set at 45 or 60 psi and is adjustable to 10-70 psi.


**With SharkBite® Direct Connectors**

	SIZE	P/N	P/N (Lead Free)
	EB-35 1/2"	22670-0045	-
	EB-35 3/4"	22671-0045	-
	EB-35 1"	22672-0045	-
	EB-45 1/2"	22673-0045	-
	EB-45 3/4"	22674-0045	-
	EB-45 1"	22675-0045	-

**With SharkBite® Double Unions & 45 psi Set Pressure**


	EB-25 3/4"	22857-0045	-
	EB-25 1"	22927-0045	-
	EB-35 1/2"	22858-0045	-
	EB-35 3/4"	22859-0045	-
	EB-35 1"	22928-0045	-
	EB-45 1/2"	22860-0045	-
	EB-45 3/4"	22861-0045	-
	EB-45 1"	22929-0045	-

**With SharkBite® Double Unions & 60 psi Set Pressure**

	EB-45 3/4"	22950-0060	-
	EB-45 1"	22951-0060	-

**EB-45 Temporary Bypass Kit**


Allows for connection to the water supply before pressure regulator installation. A time saving way to flush out all debris and particles from the plumbing system.

	EB-45 3/4"	22934	-
-------------------------------------------------------------------------------------	------------	-------	---

**SharkBite® Gauges**

Use to measure or monitor water conditions in water distribution systems. Quick push-fit installation as temporary (reusable) or permanent device in copper, CTS CPVC and PEX plumbing systems.

**Pressure Gauges**

	with 1/2" Tee	22770	-
	with 3/4" Tee	22772	-
	with 1" Tee	22774	-
	1/2" Tube Size	22883	-
	1/2" Tube Size	22885	-

**Temperature Gauges**



SIZE	P/N	P/N (Lead Free)
with 1/2" Tee	22771	-
with 3/4" Tee	22773	-
with 1" Tee	22775	-
1/2" Tube Size	22884	-
1/2" Tube Size	22886	-

**SharkBite® Thermostatic Valves**

Direct or double union SharkBite® push-fit connectors provide a simplified, time and labor saving installation. Heatguard® valves deliver water at a safe 120°F (49°C) or lower from all outlets, while allowing the heater to be set at a germ-killing 140°F (60°C) or higher which aids in preventing the growth of legionella bacteria in the water heater. And the higher tank temperature means hot water demands can be satisfied longer. Every valve is tested for performance and includes a unique adjuster tool that minimizes tampering with the valve setting. Rugged, simple construction incorporates a precision engineered polymer piston and the latest in thermostatic technology.

**Thermostatic Valves with Integral Connectors**



HG-110D 1/2"	24104-0000	-
HG-110D 3/4"	24105-0000	-

**Thermostatic Valves with SharkBite® Unions**



HG-115H 3/4"	24326-0000	-
HG-115D 3/4"	24328-0000	-

**With SharkBite® Unions and Check Valves**

HG-115H 3/4"	24327-0000	-
HG-115D 3/4"	24329-0000	-

**Thermostatic Valve Retrofit Kits**

Includes 3 CTS tailpieces. Use with SharkBite® push-fit fittings to easily connect a Heatguard valve to 1/2" and 3/4" pipe. Heatguard 110-D with gaskets purchased separately.



1/2"	24311-0000	-
3/4"	24312-0000	-

# THE SHARKBITE® CONNECTION SYSTEM

## SharkBite® PEX Tubing

SharkBite® PEX tubing is a cross-linked polyethylene tubing for a wide range of residential and commercial plumbing applications. Manufactured without an oxygen barrier for potable water systems and with an oxygen barrier for radiant floor and hydronic heating applications. The oxygen diffusion barrier applied to the exterior limits oxygen permeation through the tubing wall in hydronic heating applications which prevents corrosion of ferrous metal parts in the heating system. A repeating SharkBite® imprint pattern provides a visual aid to determine if the tube has been inserted all the way into the SharkBite® Push-Fit Fitting. This feature only works if the tubing is cut between the SharkBite® imprint pattern.



**Approvals:** The SharkBite® tubing with and without oxygen barrier is approved for use in all model codes in the US and Canada for use in hydronic and potable water systems and is certified to the following standards: NSF 14/61, NSF P171, ASTM F 876, ASTM F 877, CSA B137.5 and AWWA C904.

### PEX With Oxygen Barrier - Straight Lengths and Coils

Use for radiant floor and hydronic heating applications. The oxygen diffusion barrier is applied to the exterior and limits oxygen permeation through the tubing wall in hydronic heating applications. This prevents corrosion of ferrous metal parts in the heating system.

DIAMETER	LENGTH	BLACK TEXT
3/8" PEX Orange Color	100' coil	U855O100
	300' coil	U855O300
	500' coil	U855O500
1/2" PEX Orange Color	20' straight	U860O20
	100' coil	U860O100
	300' coil	U860O300
	500' coil	U860O500
	1000' coil	U860O1000
5/8" PEX Orange Color	300' coil	U865O300
3/4" PEX Orange Color	20' straight	U870O20
	100' coil	U870O100
	300' coil	U870O300
	500' coil	U870O500
	1000' coil	U870O1000
1" PEX Orange Color	20' straight	U880O20
	100' coil	U880O100
	300' coil	U880O300
	500' coil	U880O500

### PEX Without Oxygen Barrier - Straight Lengths and Coils

Use for potable water distribution and other water systems. Available in straight lengths and coils in pipe sizes ranging from 1/4" through 1" .

DIAMETER	LENGTH	GRAY
1/4" PEX Gray Color	5' straight	U850G5
	50' coil	U850G50

DIAMETER	LENGTH	Natural with BLACK text
3/8" PEX Natural	100' coil	U855N100
	300' coil	U855N300
	500' coil	U855N500

DIAMETER	LENGTH	Natural with RED text
3/8" PEX Natural	100' coil	U855NR100
	300' coil	U855NR300
	500' coil	U855NR500

DIAMETER	LENGTH	BLUE	RED	WHITE
3/8" PEX	5' straight	-	-	U855W5
	10' straight	-	-	U855W10
Blue, Red or White	50' coil	-	-	U855W50
	100' coil	U855B100	U855R100	U855W100

1/2" PEX Blue, Red or White	5' straight	U860B5	U860R5	U860W5
	10' straight	U860B10	U860R10	U860W10
	20' straight	U860B20	U860R20	U860W20
	25' coil	-	-	U860W25
	50' coil	-	-	U860W50
	100' coil	U860B100	U860R100	U860W100
	300' coil	U860B300	U860R300	U860W300
500' coil	U860B500	U860R500	U860W500	

3/4" PEX Blue, Red or White	5' straight	U870B5	U870R5	U870W5
	10' straight	U870B10	U870R10	U870W10
	20' straight	U870B20	U870R20	U870W20
	25' coil	-	-	U870W25
	100' coil	U870B100	U870R100	U870W100
	300' coil	U870B300	U870R300	U870W300
500' coil	U870B500	U870R500	U870W500	

1" PEX Blue, Red or White	5' straight	U880B5	U880R5	U880W5
	10' straight	U880B10	U880R10	U880W10
	20' straight	U880B20	U880R20	U880W20
	100' coil	U880B100	U880R100	U880W100
	300' coil	U880B300	U880R300	U880W300
500' coil	U880B500	U880R500	U880W500	



**SharkBite® PEX/Barb Products**

The PEX/Barb Connection System includes fittings, manifolds, valves, clamp rings, crimp rings and tools. Plus SharkBite PEX tubing in sizes and lengths for any job.

**Couplings**

**Straight Couplings**



SIZE	P/N	P/N (Lead Free)
3/8" X 3/8"	UC006	-
1/2" X 1/2"	UC008	-
3/4" X 3/4"	UC016	-
1" X 1"	UC020	-

**Reducing Couplings**

3/8" X 1/2"	UC009	-
1/2" X 3/4"	UC058	-
3/4" X 1"	UC060	-

**Adapters**

**Threaded Adapters**



3/8" x 1/2" MNPT	UC118	-
1/2" x 3/4" FNPT	UC068	-
1/2" x 1/2" FNPT	UC072	-
1/2" x 1/2" MNPT	UC120	-
1/2" x 3/4" MNPT	UC116	-
3/4" x 3/4" FNPT	UC088	-
3/4" x 3/4" MNPT	UC134	-
3/4" x 1/2" MNPT	UC138	-
3/4" x 1" MNPT	UC139	-
1" x 1" FNPT	UC094	-
1" x 1" MNPT	UC140	-
1" x 3/4" MNPT	UC142	-

**Sweat Adapters**



3/8" x 1/2" Male	UC593	-
1/2" x 1/2" Female	UC600	-
1/2" x 1/2" Male	UC607	-
3/4" x 3/4" Female	UC606	-
3/4" x 3/4" Male	UC608	-
1" x 1" Male	UC609	-

**Polybutylene Adapters (with PB Crimp Ring)**



3/8" x 3/8" PB	UC4006	-
1/2" x 1/2" PB	UC4008	-
3/4" x 3/4" PB	UC4016	-

**Tees**



SIZE	P/N	P/N (Lead Free)
3/8" x 3/8" x 3/8"	UC360	-
1/2" x 1/2" x 1/2"	UC362	-
3/4" x 3/4" x 3/4"	UC370	-
1" x 1" x 1"	UC374	-

**Bullnose Tee**

1/2" x 1/2" x 3/4"	UC408	-
3/4" x 3/4" x 1"	UC413	-

**Reducing Tees**



3/8" x 3/8" x 1/2"	UC364	-
1/2" x 1/2" x 3/8"	UC363	-
1/2" x 3/8" x 1/2"	UC434	-
1/2" x 3/8" x 3/8"	UC452	-
3/4" x 3/4" x 1/2"	UC412	-
3/4" x 3/4" x 3/8"	UC417	-
3/4" x 1/2" x 3/4"	UC444	-
3/4" x 1/2" x 1/2"	UC454	-
1" x 3/4" x 3/4"	UC414	-
1" x 1" x 1/2"	UC415	-
1" x 1" x 3/4"	UC416	-
1" x 3/4" x 1"	UC418	-

**Elbows**



3/8" x 3/8"	UC246	-
1/2" x 1/2"	UC248	-
3/4" x 3/4"	UC256	-
1" x 1"	UC260	-
1/2" x 1/2" MNPT	UC280	-

**Reducing Elbow**



1/2" x 3/8"	UC272	-
3/4" x 1/2"	UC274	-

**Drop Ear Elbow**



1/2" x 1/2" FNPT	UC334	-
3/4" x 3/4" FNPT	UC340	-
3/4" x 1/2" FNPT	UC342	-

**Adapter Elbows**



1/2" x 3/4" MNPT	UC278	-
3/4" x 3/4" MNPT	UC286	-
3/4" x 3/4" F sweat	UC626	-
3/4" x 3/4" M sweat	UC628	-

# THE SHARKBITE® CONNECTION SYSTEM

## Swivel Fittings

### Swivel Adapters

SIZE	P/N	P/N (Lead Free)
3/8" X 1/2" FNPT	UC527	-
1/2" X 1/2" FNPT	UC526	-
1/2" X 3/4" FNPT	UC534	-
3/4" X 3/4" FNPT	UC530	-
1" X 1" FNPT	UC594	-

### Swivel Elbows

3/8" x 1/2" FNPT	UC531	-
1/2" x 1/2" FNPT	UC532	-

### Swivel Toilet Connection Elbows

3/8" x 7/8" ballcock	23068	-
1/2" x 7/8" ballcock	23067	-

## PEX Chrome Plated Stops

### 1/4 Turn Angle Stops

1/2" X 1/4" comp	23056	-
1/2" X 3/8" comp	23058	-

### 1/4 Turn Straight Stop

1/2" X 3/8" comp	23057	-
------------------	-------	---

### 1/4 Turn Tee Stop

1/2" X 3/8" comp X 3/8" comp	23066	-
---------------------------------	-------	---

### Angle Stops

1/2" X 3/8" comp	23060	-
1/2" X 3/8" MHT	23064	-

## Straight Stops

SIZE	P/N	P/N (Lead Free)
1/2" X 3/8" comp	23059	-
1/2" X 1/2" MPT	23061	-
1/2" X 3/8"	23062	-
1/2" X 1/2"	23063	-

## Plugs

3/8"	UC512	-
1/2"	UC514	-
3/4"	UC518	-
1"	UC520	-

## Copper Stubout Elbow (4" X 8")

1/2" X Closed	22791	-
3/8" X 1/2"	23069	-
1/2" X 1/2"	23070	-

## Copper Manifolds with Barb Branches

1" Trunk with 3/4" barb inlets & outlets and 1/2" barb ports (2" on center)

3 port closed	22783	-
3 port open	22784	-
4 port closed	22785	-
4 port open	22786	-
6 port closed	22787	-
6 port open	22788	-
8 port closed	22789	-
8 port open	22790	-

## Polymer Bend Support for PEX pipe

1/2" with bracket	23050	-
3/4"	23051	-
mounting bracket (pair)	23052	-

## Metal Support for PEX pipe

1/2"	23053	-
3/4"	23054	-

## Polymer Insulated Suspension Clamp for PEX

1/2" CTS, F-5	23071	-
3/4" CTS, F-5	23072	-
1" CTS, F-5	23073	-

**Polymer Pipe Insulator for PEX**



SIZE	P/N	P/N (Lead Free)
1/2" CTS, F-5	23074	-
3/4" CTS, F-5	23075	-
1" CTS, F-5	23076	-

**Clamp Rings**



1/4"	-	-
3/8"	UC952	-
1/2"	UC953	-
5/8"	UC954	-
3/4"	UC955	-
1"	UC956	-

**PEX Clamp Tool**



Ergonomic design for one-hand operation. For use with SharkBite® Barb 3/8", 1/2", 3/4" and 1" fittings and SharkBite® PEX tubing.

-	UC961	-
---	-------	---

**Crimp Rings**



3/8"	23101	-
1/2"	23102	-
3/4"	23103	-
1"	23104	-

**PEX Crimp Ring Tool Kit**



Includes Crimp Tool, jaws for 3/8", 1/2", 5/8", 3/4" and 1" size crimp rings and SharkBite Barb fittings. And a go-no-go gauge, adjustment tools and case.

-	23100	-
---	-------	---

**Large PEX Crimp Tool**



3/8"	23077	-
1/2"	23078	-
3/4"	23079	-

**Crimp Ring Gauge**



3/8", 1/2" & 3/4"	23080	-
-------------------	-------	---

**Crimp Ring Removal Tool**



Use to remove 3/8", 1/2", 3/4" and 1" SharkBite® crimp rings.

SIZE	P/N	P/N (Lead Free)
-	23055	-

**PEX Tubing Cutter**



Use to cut 1/4", 3/8", 1/2", 3/4" and 1" SharkBite PEX tubing.

-	U701	-
---	------	---

**Regulators with PEX/Barb Ends**



EB-25 3/4"	22865-0045	-
EB-25-400 3/4"	22866-0045	-
EB-25 1"	22867-0045	-
EB-25-400 1"	22868-0045	-

EB-35 3/4"	22364-0045	-
EB-35 1"	22365-0045	-

EB-45 3/4"	22798-0045	-
EB-45 1"	22799-0045	-

**Ball Valves with PEX/Barb Ends**



1/2"	22461	-
3/4"	22462	-
1"	22463	-



**OVERBUILT IS AN UNDERSTATEMENT.®**





## CERTIFICATIONS

The **SharkBite**® push-fit fittings have been design certified and listed to ASSE 1061/NSF 61. The **SharkBite**® push-fit fittings are listed by IAPMO and are certified for potable and hydronic heating water distribution (note: Glycol mixture for hydronics is not to exceed 50% concentration). The **SharkBite**® push-fit fittings have been certified for underground applications and as a manufactured joint without access panels and they meet UPC, IPC and cUPC requirements.

**Please consult with local plumbing codes concerning specific applications.**

The **SharkBite**® tubing without oxygen barrier is approved for all model codes in the US and Canada for use in hydronic and potable water systems and is certified to the following standards: NSF 14/61, NSF P171, ASTM F 876, ASTM F 877, CSA B137.5 and AWWA C904.

The **SharkBite**® tubing with oxygen barrier is approved for use in all model codes in the US and Canada for use in hydronic and potable water systems and is certified to the following standards: NSF 14/61, NSF P171, ASTM F 876, ASTM F 877, CSA B137.5 and AWWA C904.

**Note:** The **SharkBite**® push-fit fittings are not approved for use with chrome-plated pipe.

## SHARKBITE® PEX INSIDE (ID) AND OUTSIDE DIAMETER (OD)

Nominal Diameter	OD inches	ID inches
1/4"	0.375	0.305
3/8"	0.500	0.350
1/2"	0.625	0.475
5/8"	0.750	0.652
3/4"	0.875	0.671
1"	1.125	0.885



**OVERBUILT IS AN UNDERSTATEMENT.®**

2400 7th Avenue SW  
Cullman, AL 35055-0278  
1-877-700-4242  
FAX: 1-877-700-4280  
www.cashacme.com

***In Canada Contact:***

1-888-820-0120  
FAX: 1-888-820-0121  
www.cashacme.ca



A Division of the Reliance Worldwide Corporation